

An aerial photograph showing a coastal town. In the foreground, there is a large, dark, rectangular area that appears to be a parking lot or a paved pier. To the right of this area, there are several residential streets with houses. The background shows more residential buildings and a body of water. The text is overlaid on the top left of the image.

Town of Winthrop Multi-use Town Pier

Presented by:

Thomas Reilly

President of Town Council

Town Landing Site

- Presently State Boat Ramp
 - No other Water Access
- New Waterfront Facility to Service:
 - Commercial Fishing Vessels
 - Fishing Excursion Boats
 - Harbor Island Tour Vessels
 - Ferry and Water Taxis
 - Transient Recreational Boats
 - Town Harbormaster Vessels
- Multi-Use Terminal Building



Waterside Facilities

(Under Construction)

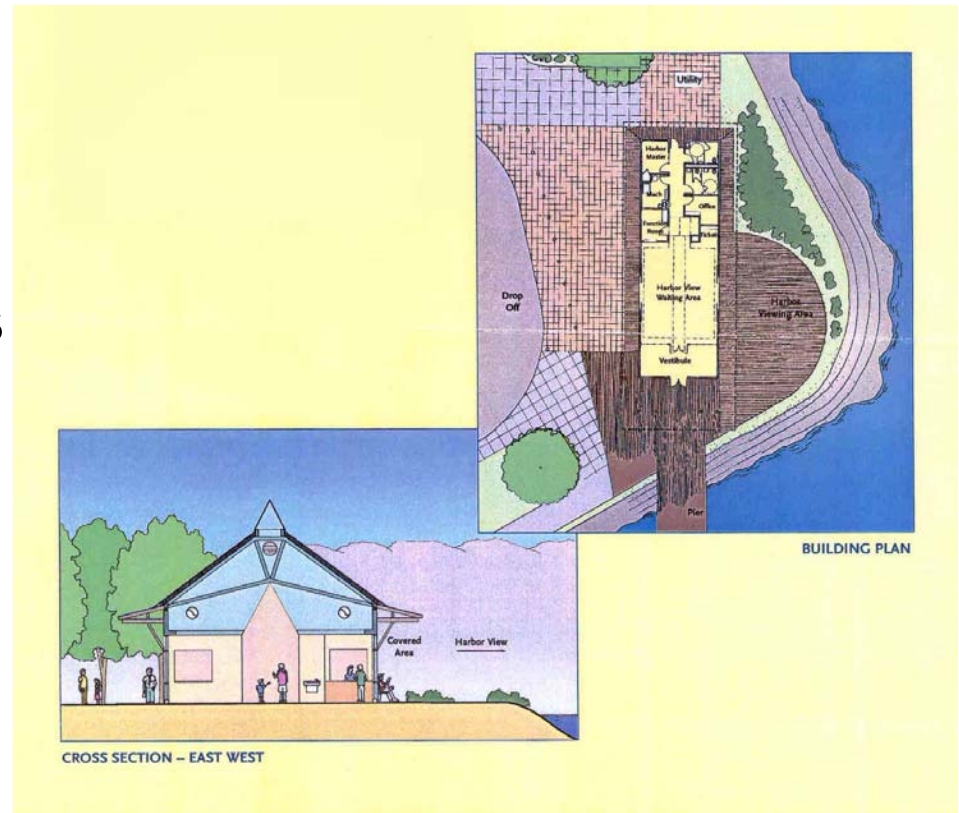
- 260 ft. by 16 ft. Pier
- 24 ft. by 30 ft. Head
- Full Handicap Access to Pier and Boarding Float
- 30 ft. by 80 ft. Boarding Float
- 460 Linear Feet Concrete Floats
- Jib Crane
- Utility Facilities on Pier
- Utility Upgrades on Site



Landside Improvements

(Future Work)

- Multi-use Terminal Building
- Harbormaster Office
- Fishing Support Facilities
- Reconstructed Parking and Lighting
- Shoreline Revetment Repairs



Key Components

- Waterside Facilities Construction (\$2,200,000)
To Be Completed Fall 2007
- Landside Facilities Bidding and Construction
(\$1,700,000 – Seeking Seaport Funding Support)